



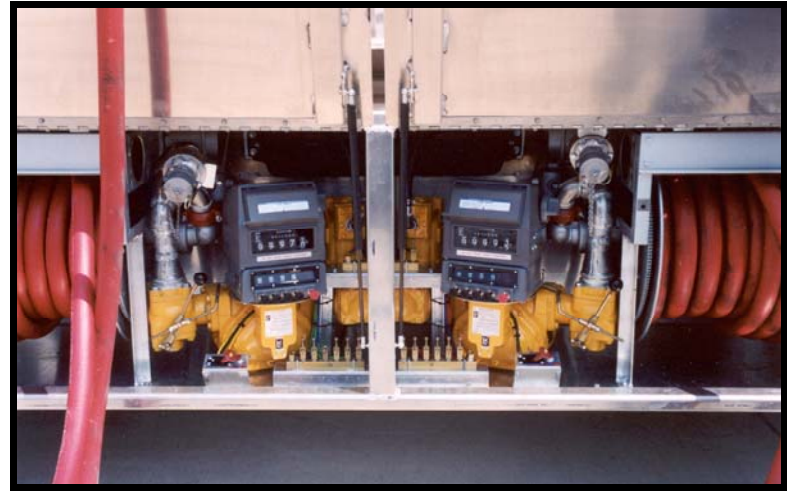
TRANS-TECH INDUSTRIES, INC.  
East-West Industrial Park  
Brewer, ME 04412  
(207) 989-0100

## TRANSPORT MODEL TANK



# FEATURES

- Ideal for Bulk Commercial Deliveries
- Required Equipment Installed in Side Cabinets
- Full Length Hose Storage Trays
- Betts LED Lights with Marine Grade Junction Boxes



- Rugged Rear End Protection (Bumper)
- Available in Various Sizes up to 6000 Gallon Capacity in Single or Multi-Compartment Double Bulkhead Arrangements
- Low Center of Gravity Tank Design
- Certified to DOT 406 Specifications